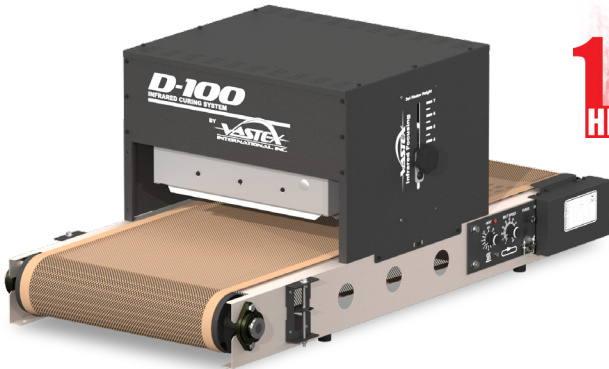


ENTRY LEVEL INFRARED DRYERS

D1-SERIES



**15 YEAR
HEATER WARRANTY**



CE CERTIFIED
BY CERTIFICATION EXPERTS
THE NETHERLANDS

Heater
Wattage
Belt Width / Conveyor Length
Heater Width**
Power Requirements
Chamber (tunnel) Length
Assembled Dimensions

Plastisol @ 25 secs.*
Waterbased/Discharge @ 70 secs.*

D-100

16" x 16" (40.64 x 40.64 cm)
1,625 watts (1.625 kW)
18" (45.7cm) x 46" (1.17m)
16" (40.6cm)
120V, NEMA 5-15P, 12.5A
240V, NEMA 6-15P or Int'l plugs, 6.5A

D-1000

16" x 20" (40.64 x 50.8 cm)
2,050 watts (2.05 kW)
26" (66cm) x 56" (1.43m)
20" (50.8cm)
120V, NEMA 5-20P, 16.5A
240V, NEMA 6-15P or Int'l plugs, 8.2A

CURE TIMES

110/hr	110/hr
50/hr	50/hr



Adjustable belt speed and temperature for better control.



Tilting heater for curing non-flat items such as hats.

Our dense coil pattern, heater shields and a 6.35 watt per sq-in infrared heater eliminates hot and cold spots.

For more compact shipping, the D-100 and D-1000 are partially assembled. Optional factory assembly at additional charge.

Features

SMART Teflon coated fiberglass belt with tracking system
ADJUSTABLE Speed, temperature, heater height and tilt
FAST 110+* shirts per hour with plastisol and 50+* with discharge
PRECISE Powerful infrared heater with tight coil pattern and heat shields
VALUABLE Best warranty, high quality, exceptional service
COMPACT Total footprint is less than 8 sq.ft (2.44 sq.m) on the D-100 and about 10 sq.ft. (3 sq.m.) on the D-1000

Options

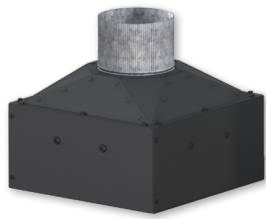
- S1-27 stand with wheels (D-100 only)
- S1-27 w/ S127-DEMT stand with wheels (D-1000 only)
- EXH-D exhaust for new and existing D-100 and D-1000 dryers

* Production speeds are estimates are based on 16" centers and will vary depending on ink manufacturer, humidity of shop, and other variables.

** Recommended maximum image width = heater width minus 4" (10cm).



INFRARED DRYER ACCESSORIES



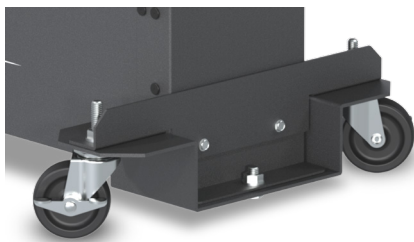
EXH-D
Add-On exhaust for
D-100 and D-1000



SI-27
Stand for D-100



**SI-27 W/
SI-27-DEMT**
Stand for D-1000

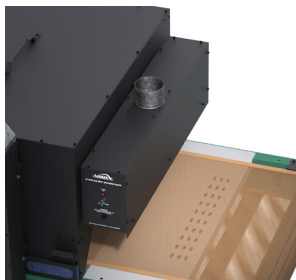


WS-E-DD
Drop Down Wheel Set for
DB, LR & EC-I Dryers



WS-EC
Standard Wheel Set for
all non-tabletop Dryers

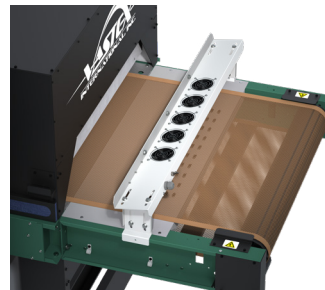
WS-EHD
Drop Down Wheel Set for
EC-II, ER & BR Dryers



EXHAUST HOOD

FEATURES

- Removes fumes at exit the dryer
- EXH-18 fits 18" (46cm) wide belts
- EXH-30 fits 30" (76cm) wide belts
- EXH-54 fits 54" (137cm) wide belts
- Available in 120v or 240v



CONVEYOR AIR BAR

FEATURES

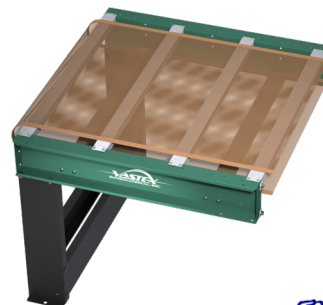
- Cools ink as garments exit the dryer
- CAB-18 fits 16-26" (40-66cm) wide belts
- CAB-30 fits 30" (76cm) wide belts
- CAB-54 fits 54" (137cm) wide belts
- CAB-78 fits 78" (198cm) wide belts
- Work on many non-Vastex dryers
- Available in 120v or 240v



HAT SUPPORT RAIL

FEATURES

- Angles hats so front is parallel with heaters
- HR-1 fits EconoRed II dryers
- HR-2 fits EconoRed III & BigRed Dryers



CONVEYOR EXTENSIONS

Extend your conveyor in
18" (46cm), 36" (92cm) and
54" (137cm) increments

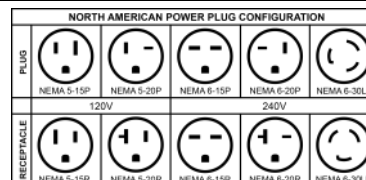


Lo-E & D1 Series

Technical Specifications



	Lo-E1D	Lo-E2D	Lo-E3D	D-100	D-1000
Heater Warranty	15 Year	15 Year	15 Year	15 Year	15 Year
Defect Warranty	3 Year	3 Year	3 Year	3 Year	3 Year
Shirts / Hr Plastisol*	64+ @ 90 secs	88+ @ 90 secs	120+ @ 90 secs	110+ @ 25 secs	110+ @ 25 secs
Shirts/hr wb/discharge*	64+ @ 60 secs	88+ @ 60 secs	180+ @ 60 secs	50+ @ 70 secs	50+ @ 70 secs
Shirts/hr DTG/digital*	23 @ 3 min.	45 @ 3 min.	64 @ 3 min.	N/A	N/A
Time in Tunnel Range (mm:ss)	1:00 - 5:00	1:00 - 5:00	1:00 - 5:00	00:17 - 01:20	00:17 - 01:20
Belt Speed	0.7 - 9.3 FPM (0.2 - 2.8 MPM)	0.7 - 9.3 FPM (0.2 - 2.8 MPM)	0.7 - 9.3 FPM (0.2 - 2.8 MPM)	0.6 - 7.4 FPM (0.18 - 2.3 MPM)	0.6 - 7.4 FPM (0.18 - 2.3 MPM)
Belt Motor Torque	100 in-lb	100 in-lb	100 in-lb		
Exhaust (Free Air)	280 CFM (7.9 CMM)	370 CFM (10.5 CMM)	370 CFM (10.5 CMM)	177 CFM (optional)	177 CFM (optional)
Exhaust Diameter	6" (15.24 cm)	6" (15.24 cm)	6" (15.24 cm)	4" (10.16 cm)	4" (10.16 cm)
Overall Length	48" (122 cm)	88" (224 cm)	88" (224 cm)	46" (117 cm)	56" (143 cm)
Overall Width	41" (105 cm)	41" (105 cm)	41" (105 cm)	24" (61 cm)	32" (81 cm)
Overall Height	50" (127 cm)	50" (127 cm)	50" (127 cm)	24" (61 cm)	24" (61 cm)
Belt Width	30" (76cm)	30" (76cm)	30" (76cm)	18" (45.7 cm)	26" (66 cm)
Chamber Length	18"(46cm)	35"(89cm)	52"(132cm)	18" (45.7 cm)	18" (45.7 cm)
Chamber Infeed Width	33.5" (85 cm)	33.5" (85 cm)	33.5" (85 cm)	19.5" (49.5 cm)	27.75" (70.5 cm)
Chamber Infeed Height (adjustable)	2" - 7" (5 - 17.7 cm)	2" - 7" (5 - 17.7 cm)	2" - 7" (5 - 17.7 cm)	2" - 7" (5 - 17.7 cm)	2" - 7" (5 - 17.7 cm)
Heat Range (@ Heater)	0-650F° (0-343C°) @ 230V 0-975F° (524C°) - booster 0-575F° (0-302C°) @ 208V 0-875F° (468C°) - booster	0-650F° (0-343C°) @ 230V 0-975F° (524C°) - booster 0-575F° (0-302C°) @ 208V 0-875F° (468C°) - booster	0-650F° (0-343C°) @ 230V 0-975F° (524C°) - booster 0-575F° (0-302C°) @ 208V 0-875F° (468C°) - booster	0-750 F° (0-399 C°) @ 120 or 240V	0-750 F° (0-399 C°) @ 120 or 240V
Heater Size	16" x 24" (40 x 61 cm)	16" x 24" (40 x 61 cm)	16" x 24" (40 x 61 cm)	16" x 16" (40.6 x 40.6 cm)	16" x 20" (40.6 x 50.8 cm)
Total Wattage	2,850 (2.85kW) @ 230V or 2,975 (2.975kW) @ 208V	4,600 Watts (4.6kW) @ 230V or 4,725 Watts (4.725kW) @ 208V	6,350 Watts (6.35kW) @ 230V or 6,475 Watts (6.475kW) @ 208V	1,625 Watts (1.625kW)	2,050 Watts (2.05kW)
Cost/hr to operate based on 10 cents/kwh	29 cents @ 230V 30 cents @ 208V	46 cents @ 230V 48 cents @ 208V	64 cents @ 230V 65 cents @ 208V	16 cents	20 cents
Electrical Specs	Amperage shown is for reference only, actual amperage at installation will depend on exact line voltage.				
120V, 1 Phase 3 wire 50/60 HZ	N/A	N/A	N/A	FLA = 12.5A	FLA = 16.5A
208V, 1 Phase 3 wire 50/60 HZ	FLA = 15A	FLA = 24A	FLA = 33A	FLA = 8.5A	FLA = 10A
230V, 1 Phase 3 wire 50/60 HZ	FLA = 12.5A	FLA = 20A	FLA = 29A	N/A	N/A
240V, 1 Phase 3 wire 50/60 HZ	FLA = 14A	FLA = 22A	FLA = 31A	FLA = 6.5A	FLA = 8.5A
400V, 3 Phase 5 wire 50/60 HZ	N/A	FLA = 7	FLA = 10A	N/A	N/A
Electrical Connection	Cordset Included NEMA 6-20P	All amps shown are FLA (Full Load Amps), not recommended line size! Dryers must be hard wired to the power terminal provided. A licensed electrician must be consulted and should refer to articles, 210.20(a), 215.3 and 310 of the NEC code.		Cordset Included NEMA 5-15P (120V) NEMA 6-15P (240V)	Cordset Included NEMA 5-20P (120V) NEMA 6-15P (240V)
Unit Weight	220 lbs (100 kg)	360 lbs (163.3 kg)	450 lbs (205 kg)	89 lbs (41 kg)	114 lbs (52 kg)
Shipping Weight**	380 lbs (173 kg)	530 lbs (241 kg)	620 lbs (282 kg)	Box 1 - 57 lbs (26 kg) Box 2 - 16 lbs (7.3 kg) Box 3 - 21 lbs (9.6 kg) Boxes on skid - 115 lbs (52 kg)	Box 1 - 17 lbs (7.7 kg) Box 2 - 24 lbs (10.9 kg) Box 3 - 35 lbs (15.9 kg) Box 4 - 43 lbs (19.5 kg) Box 5 - 11 lbs (5 kg) Boxes on Skid - 226 lbs (105.5 kg)
Shipping Dimensions**	49" x 45" x 40" (124 x 114 x 102 cm)	54" x 43" x 60" (137 x 109 x 152 cm)	49" x 45" x 59" (124 x 114 x 150 cm)	Box #1 - 54" x 29" x 8" (138 x 74 x 21 cm) Box #2 - 21" x 21" x 7" (53x53x18 cm) Box #3 - 25" x 18" x 6" (64 x 46 x 15 cm) On Skid - 60" x 32" x 22" (153 x 82 x 56 cm)	Box #1 - 27" x 21" x 7" (69 x 54 x 18 cm) Box #2 - 31" x 21" x 9" (79 x 54 x 23 cm) Box #3 - 36" x 31" x 8" (92 x 79 x 21 cm) Box #4 - 36" x 31" x 8" (92 x 79 x 21 cm) Box #5 - 31" x 15" x 8" (79 x 38 x 21 cm) On Skid - 49" x 37" x 36" (125 x 94 x 92 cm)



1 in = 2.54 cm
1 lb = 0.454 kg

* Production speeds are estimates are based on 16" centers and will vary depending on ink manufacturer, humidity of shop, and other variables.

** All shipping weights and dimensions are for continental US shipping only. Call for other shipping specifications. Ex-works from Bethlehem, PA.