

**New & Improved**

**PAROPY CL TRIMFREE DARK™ (v.4)**

**APPLICATION INSTRUCTIONS**

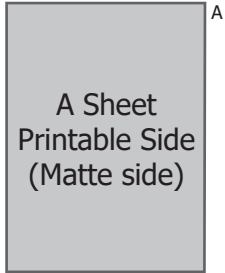


Figure 1-1

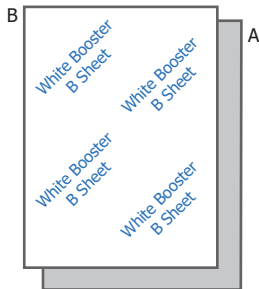


Figure 7-1

A sheet (grey) on bottom with matte side face up.  
B sheet on top with backmark face up

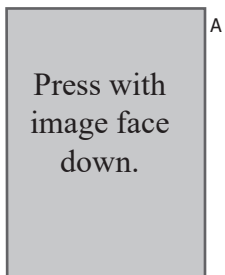


Figure 11-1

Press A sheet to shirt with glossy side face up

**STEP BY STEP**

*Printing Your Image onto the A Sheet*

- Step 1:** Using your software (e.g. Photoshop, Illustrator) create the white toner mask (refer to your White Laser Toner [user manual](#))
- Step 2:** Load A sheet into Printer. Printable side is the matte side
- Step 3:** Set Print mode to "2 Step Select". To do this, go into your printer driver setting and set the media type to "2 Step Select" (Refer to page 3).
- Step 4:** Feed A sheet into the bypass tray of your color laser printer so that the Matte side is face down. **Print one at a time to prevent multi feeding jamming** (Figure 1-1).
- Step 5:** Print the image mirrored.  
(The print driver has mirror image option checked by default)

*B Sheet Transfer*

- Step 6:** Before first press, preheat lower platen for 30 seconds.
  - Step 7:** Place imaged A sheet on heat press with image face up (matte side up).
  - Step 8:** Place B sheet on top with coating face down (blue backmark face up) (Figure 7-1).
  - Step 9:** Press at 330°F (165°C) for 75 seconds using firm pressure
  - Step 10:** Briefly rub B sheet with a fabric before peeling it off the A sheet. While still on the press, peel it off diagonally in one slow fluid motion
- Note* Coating from B sheet will stick to areas with toner on A sheet.  
If toner from A sheet sticks to B sheet, increase the temperature by 5°F.

*T-shirt Transfer*

- Step 11:** Place shirt on heat press and prepress for 5-10 seconds to remove moisture.
- Step 12:** Leave shirt on heat press, and place imaged A sheet on top of shirt with image face down (glossy side face up). Press the shirt at 330°F (165°C) for 75 seconds.
- Step 13:** Wait a minimum of 5 minutes and peel the A sheet off shirt when **completely cold**.
- Step 14:** Repress shirt with silicon sheet for another 30 seconds for increased wash resistance

**Important:** TrimFree Dark requires a professional heat press. Joto will only support this product when used with a high quality heat press that can produce consistent heat and good pressure.

**PAROPY CL TRIMFREE DARK™ (v.4)**

**TIPS AND HINTS**

**NOTES**

**Recommended Fabrics**

White, Black, or Colored:  
100% cotton  
100% polyester  
Poly/cotton blends

**Accessories Required**

Computer, Color Laser Printer with white toner, Professional Heat Press, Parchment Paper, Paropy CL TrimFree Dark (A and B sheet)

**Printable side**

The printable side of the transparent A sheet is the matte side

**Paper Setting**

Ensure you are using the print mode "2 Step Select". If other paper modes are used, the paper may jam or the white may not fuse properly onto the paper.

For better wash durability, print images with halftone patterns (images with holes in it).

**Pressure Settings**

To ensure that the coating has properly fused with the fabric, we recommend to use medium to light pressure.

**Separating A-B Sheet**

When separating A-B sheet (Step 10), rub it using a fabric for a few seconds, then peel immediately. No toner should stick on B sheet. If toner sticks onto B sheet, try different peel times. Normally faster peel time or more pressure will fix the problem. Keep the A sheet down on the press as you peel the B sheet off, do not let the A sheet rise to the air lest it cools down and create an uneven peel. Recommended to peel in a diagonal fashion in one fluid swoop.

**Care Instructions**

Wait 24 hours before washing. Machine wash using mild detergent. Do not use bleach or other aggressive cleaning agents. Cannot be dry cleaned. Wash Temperature cannot exceed 105F. **Hang dry only (dryer machine not recommended).**

**Storage**

CL TrimFree Dark has an indefinite shelf life when stored at room temperature. Keep away from direct heat, sunlight and humidity.

**APPLICATION SUMMARY**

	<b>Printing A sheet</b>	<b>B sheet transfer</b>	<b>T-shirt Transfer</b>
Printer:	White Toner Printers	-	-
Print Mode:	2 Step Select	-	-
Image:	Mirror	-	-
Press Time:	-	<b>75 sec.</b>	<b>75 sec.</b>
Temperature:	-	<b>330°F (165°C)</b>	<b>330°F (165°C)</b>
Pressure:	-	Firm	Maximum
Peel:	-	Hot	Completely Cold
Repress	-	-	Repress for 30 secs with silicon sheet for increased wash resistance
Wash Temp.:	-	-	105°F(40°C)

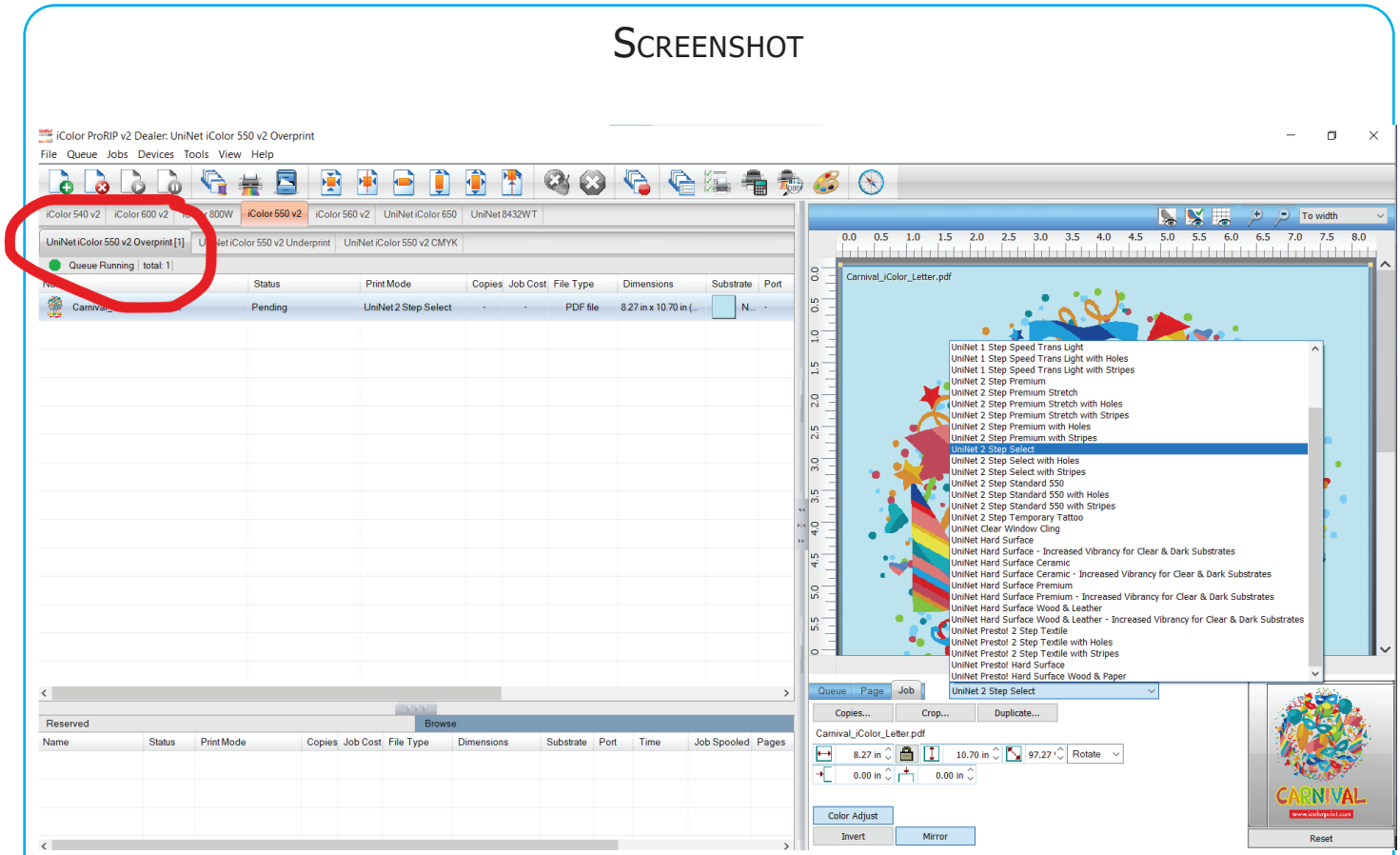
All technical information and recommendations are based on tests we have conducted. Users should conduct their own tests before proceeding

**Important:** TrimFree Dark requires a professional heat press. Joto will only support this product when used with a high quality heat press that can produce consistent heat and good pressure

**PAROPY CL TRIMFREE DARK™ (v.4)**

**TIPS AND HINTS**

SCREENSHOT



**Must be in Overprint; the correct print mode will be found under the drop down menu, as shown above.**

All technical information and recommendations are based on tests we have conducted. Users should conduct their own tests before proceeding

**Important:** TrimFree Dark requires a professional heat press. Joto will only support this product when used with a high quality heat press that can produce consistent heat and good pressure